

The Polo

Plan number: DE056

First floor sq ft: 2,880

Second floor sq ft: N/A

Total sq ft: 2,880

Bonus room sq ft: N/A

Dimensions: 69'-8" x 83'-10"

Bedrooms: 4

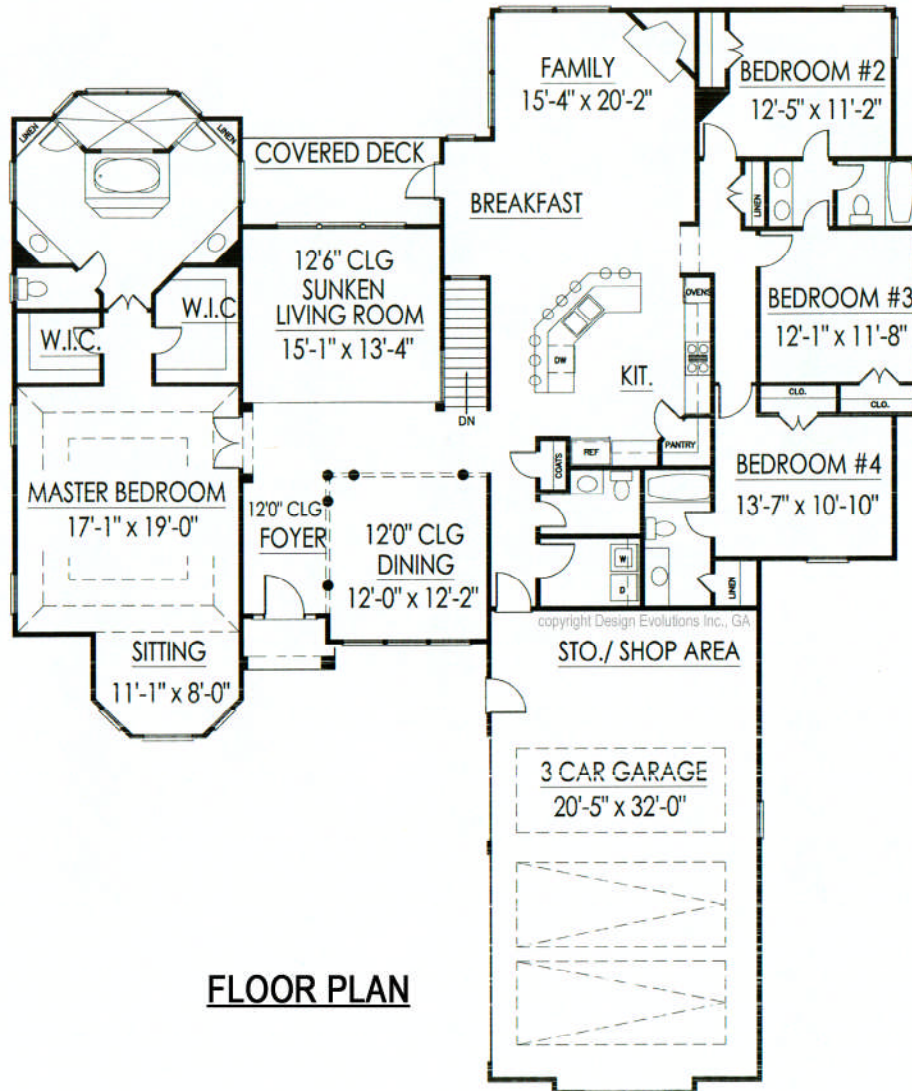
Bathrooms: 3.5

Foundations: basement, slab

Copyright Design Evolutions Inc., GA

Artist rendering, may vary from actual plan

Capital Home
Builders & Dev., Inc
"Technology Built"



FLOOR PLAN

Design Evolutions Inc., GA
2140 McGee Road
Suite C-140A
Snellville, GA 30078
Phone: 770-978-4043

www.designevolutions.com

DESIGN Evolutions INC., GA
RESIDENTIAL DESIGN SERVICES