



Copyright Design Evolutions Inc., GA

Artist rendering, may vary from actual plan

The Malveaux

Plan number: DE111

First floor sq ft: 2,090

Second floor sq ft: 968

Total sq ft: 3,058

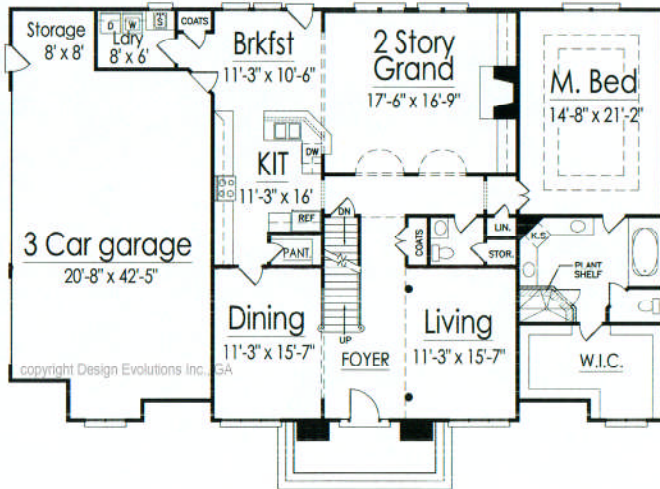
Bonus room sq ft: 231 (in add. to total sq ft)

Dimensions: 68'-0" x 45'-0"

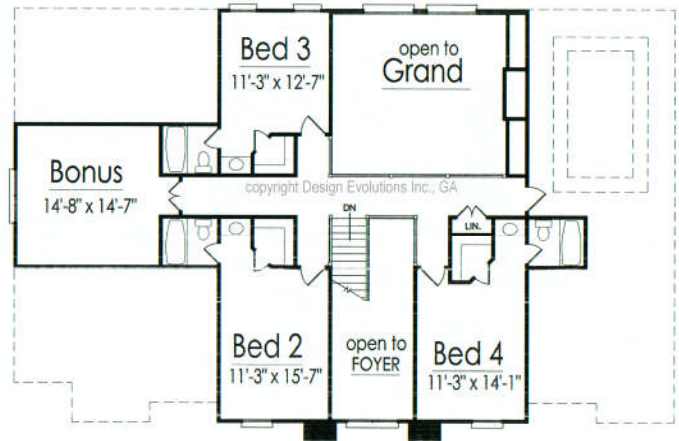
Bedrooms: 4

Bathrooms: 4.5

Foundations: basement, crawlspace



FIRST FLOOR



SECOND FLOOR